

Description

System Link, from DMP, is an end-user alarm panel management software solution that allows you to easily maintain important panel operations from your personal computer.

Through System Link, you are able to setup new alarm system users and System Link operators, configure new panel accounts, monitor system status, silence alarms, and more.

Operation

At program start-up, System Link™ automatically displays the Operator Log On window for you to enter a valid operator password (factory default = New). After you enter a valid password, the main screen appears containing the menu bar from which you can access the various options. At any time during your System Link session, you may use the Help file to learn more about the program. Select Help in the Menu Bar or press F1 for context-sensitive help specific to the open dialog box.

After logging on to System Link, select a panel from the Panel Information window. Then Connect to that panel using the Connect window. If you are not connected to a panel, the file information is read-only and changes are not saved. After connecting to a panel use the menu bar to select the options you need to control the panel. After you have finished your session with the panel, you must Disconnect from the panel before you can connect to a new panel.

System Link™ Menu Bar

File—This menu allows you to open, close, modify, and create new account files. You may also print account information, panel programming, and panel event reports.

Panel Information: select the panel you wish to open, modify the account information, create new accounts, and copy and delete account files.

Close Panel: close the panel that is open.

Print: display on screen or print to a local printer account information, panel programming, panel event buffer, and activity log reports.

Exit: quits the System Link™ program.

System—This menu allows you to log on or off from System Link, configure your System Link software, and set up your communication link with your alarm panels. You may also authorize operators, and access diagnostic information.

Log On/Off: enter your Login ID and your password to use System Link™.

Configure > System Link: change the receiver and program setup.

Operator Configuration: configure System Link operators. You can assign different operators different levels of authority, add users, and delete operators.

Diagnostics: view the strings of data that the panel is sending and receiving from your computer.

Panel—This allows you to connect and disconnect with your panel and retrieve data from the panel. You can also monitor system status and request panel events.

Connect: connect System Link™ to a panel. You must be connected to the panel to make any changes.

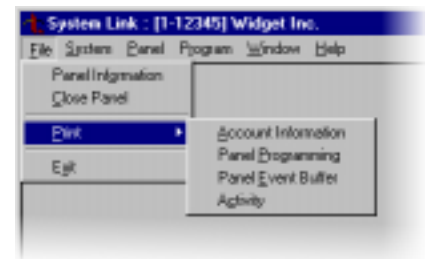
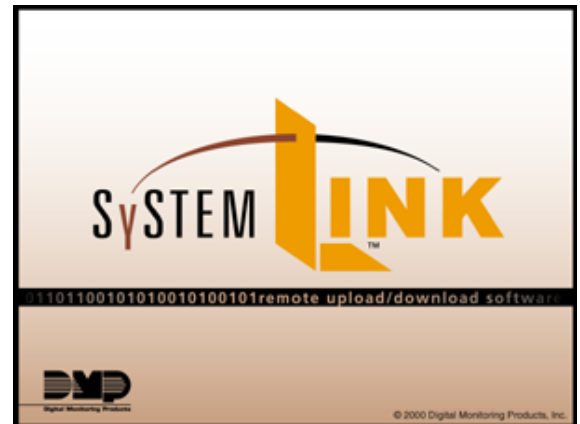
Disconnect: disconnects System Link™ from a panel and automatically hangs up the telephone phone line.

Retrieve: upload panel Schedules, User Codes and Holiday Dates which overwrites and updates the account database file.

Request Events: uploads a copy of the panel's event history.

Hangup: manually hangs up the telephone line.

Note: While the panel is still responding to System Link, do not use **Hangup** to disconnect from a panel. Always use **Disconnect** to terminate the connection.



Program—The Program menu allows you to program Holiday Dates, Schedules, Profiles, and User Codes on DMP alarm panels that offer that function.

Holiday Dates: enter dates that are used by the Holiday Schedules to override daily schedules.

Schedules: enter or update opening, closing, and output (relay) schedules.

Profiles: define the authority of each user code in the system.

User Codes: enter or make changes to user codes.

***Note:** You must be connected to a panel through System Link™ to save changes; otherwise file information is read-only and changes are not saved.*

Help—System Link contains a comprehensive Help file you can access from either the main menu or by pressing the F1 key while any program dialog box is open.

Help: display the Help file that you can search to help answer your questions about System Link™.

About: view the version number of your System Link™ program and copyright information.

Panel Compatibility

System Link is compatible with all DMP Command Processor™ Panels. Refer to the chart below for a complete list of those panels.

Panel Compatibility	
DMP Panels	Version
XR5	All
XR6	All
XR10	All
XR20	All
XR40	All
XR200	All
XR200-485	All
XR200-485B	All
XR2400F	All
1512	All
1812/1712	All
1912	All
1912XR	All
1612	N/A

Installing Dealer Information

Name: _____

Telephone: _____

Digital Monitoring Products

2500 N. Partnership Boulevard Springfield, MO 65803 800-641-4282